

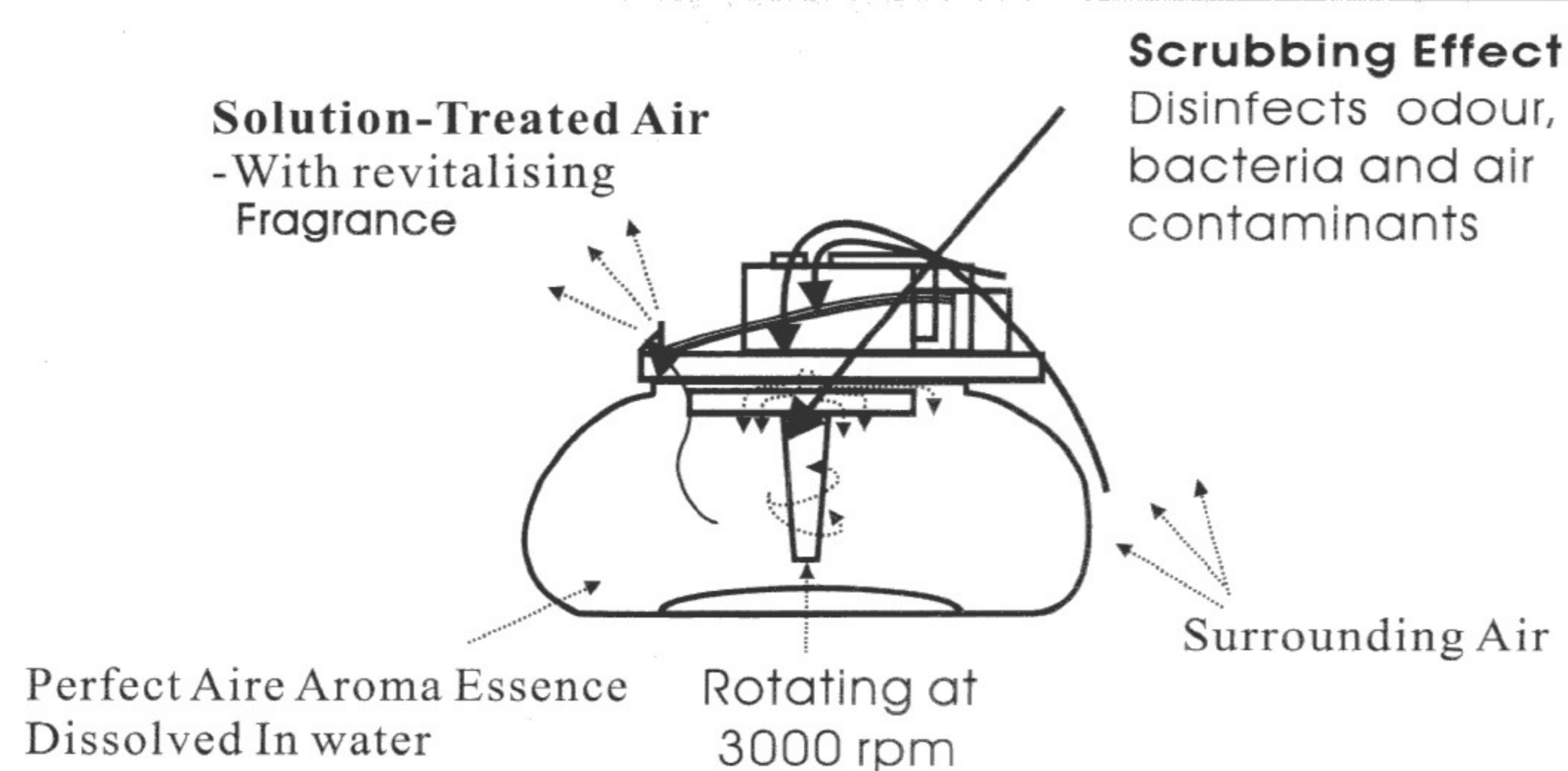
## INSTRUCTION MANUAL

- ❖ Please read all instructions carefully. Improper handling and abuse of the product will deem the warranty as void.

### IMPORTANT

- ❖ This appliance is not intended for use by persons (including children) with reduced physical, sensory or mental capabilities, or lack of experience and knowledge, unless they have been given supervision or instruction concerning use of the appliance by a person responsible for their safety.
- ❖ Children should be supervised to ensure that they do not play with the appliance.
- ❖ If the supply cord is damaged, it must be replaced by the manufacturer, its service agent or similarly qualified persons in order to avoid a hazard.
- ❖ Any special requirements e.g. Indoor use only.

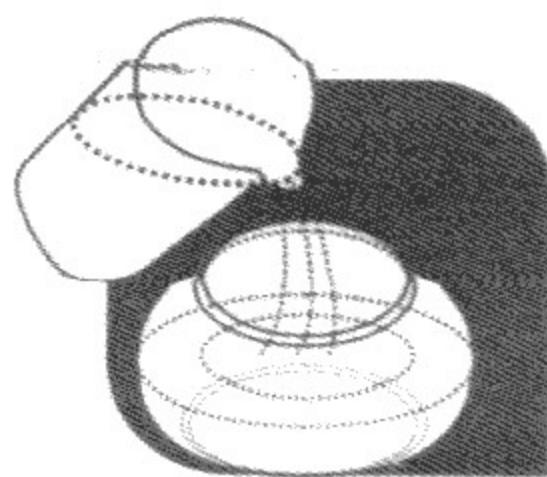
### This is how PerfectAire works



### DIRECTION OF USE.



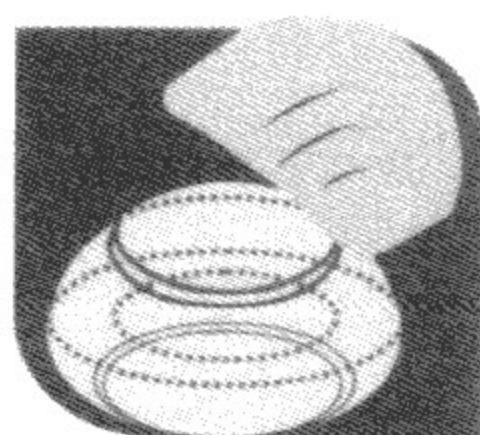
- (1) Remove Cable tie to extend  
Cable electrical cord



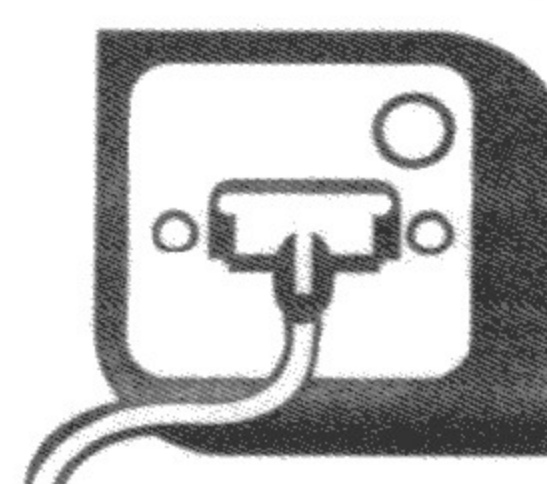
- (2) Fill water container with clean tap  
-water up to the MAXIMUM line



- (3) Add recommended amount of  
Perfect Aire Revitalising concentrate  
to the water



- (4) Replace TOP-COVER Make sure  
TOP-COVER is securely seated on the water container.



- (5) Plug in the electrical cord and turn  
on the switch

## PERFECTAIRE CLEANING INSTRUCTIONS

Please clean your unit twice weekly for optimal function:

- 1) Throw out dirty water and rinse-DON'T USE SOAP and don't put in the dishwasher-IT WILL MELT.
- 2) If there is a residue developing from lime in your water or pollutants from the air, use some vinegar to clear the residue.
- 3) Refill with clean water to just below the MAX line, preferably filtered, and add 1-2 teaspoons of your favourite MicrobeShield solution.
- 4) Next, remove the nozzle by holding the round base plate firmly and twisting the nozzle anti-clockwise. Replace once you have cleaned it out-a paintbrush works quite nicely.
- 5) The round base plate can also be removed for cleaning, with a firm pull (monthly). If you own the Egg unit, you can also remove the Fan with a firm pull. Scrub with a toothbrush-soak in vinegar first if necessary.
- 6) Should your unit be spinning but not spraying, check if the little silencer cap on the end of the nozzle is not blocked with dust or fluff. Clean with an earbud and your problem is solved. This happens more easily if the unit is used intermittently-constant usage is optimal. Please note the Mini Magic Ball does not have a silencer.
- 7) If you own the Egg unit, once every 4 months please remove the small silver screw next to the controls on the side of the Egg unit, then twist to remove the dome lid and clean out whatever fluff and dust has accumulated with a dry paintbrush.

Treat your unit well and it will serve you well for a long time to come. 😊